

Part List, HVC

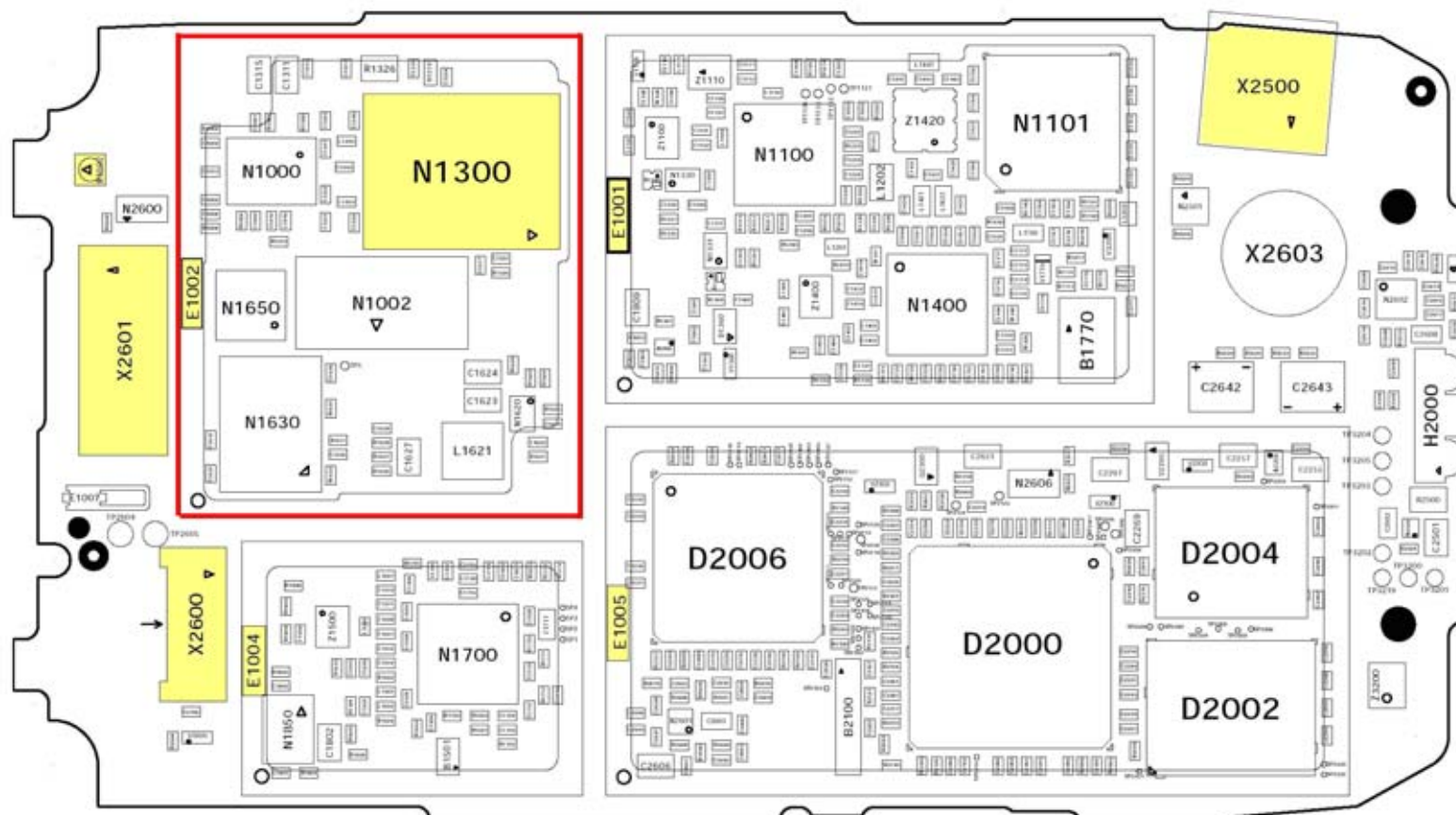
Applicable for Z1010

1	Mounting Drawings	2
1.1	Main Board (Primary side).....	2
1.2	Main Board (Secondary side).....	3
1.3	Sub PCB	4
1.4	Part List Main Board	5
1.5	Part List Sub PCB.....	6
2	Revision History	7

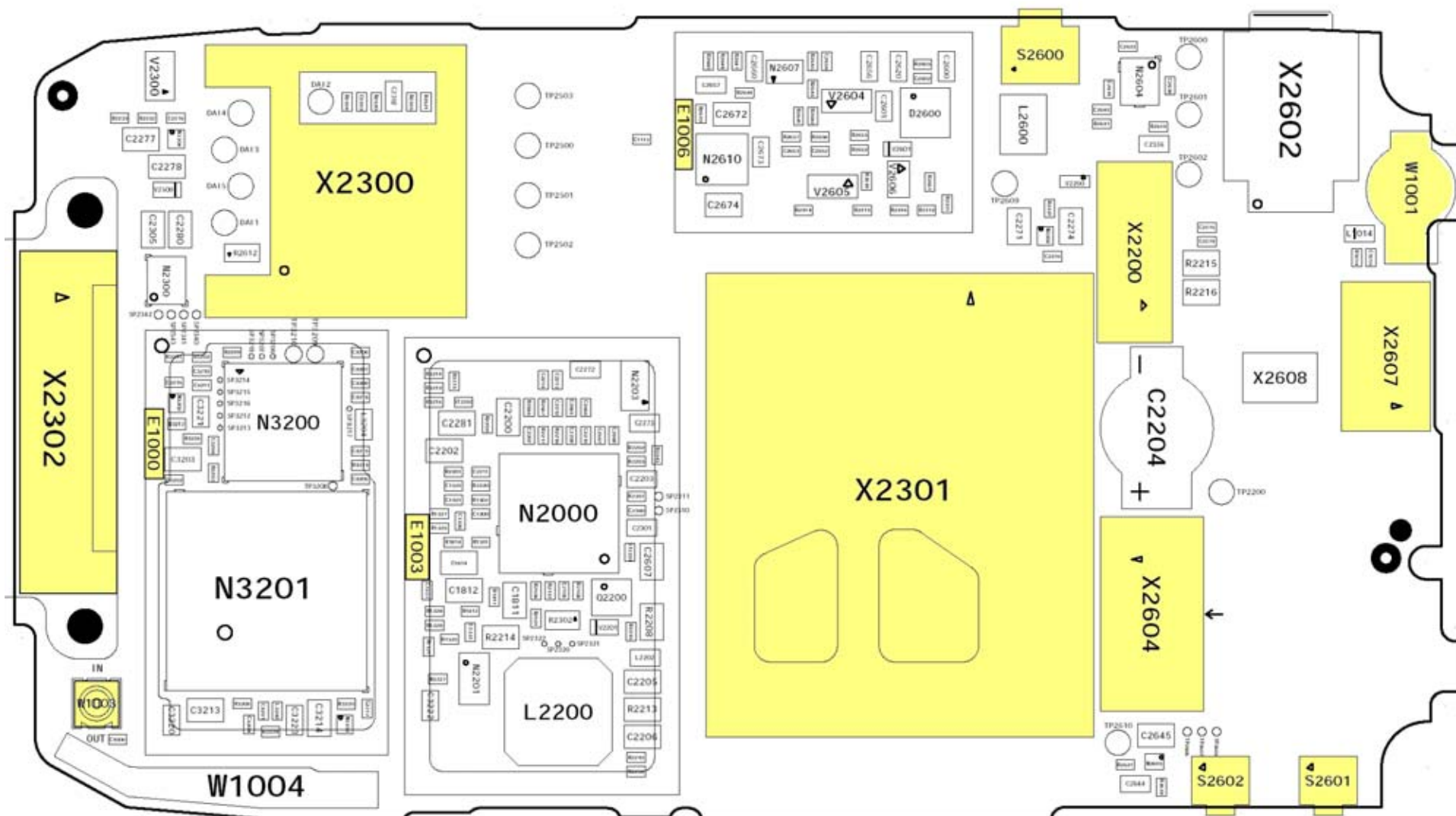
1 Mounting Drawings

The Mounting drawings show the components position on the printed board.

1.1 Main Board (Primary side)

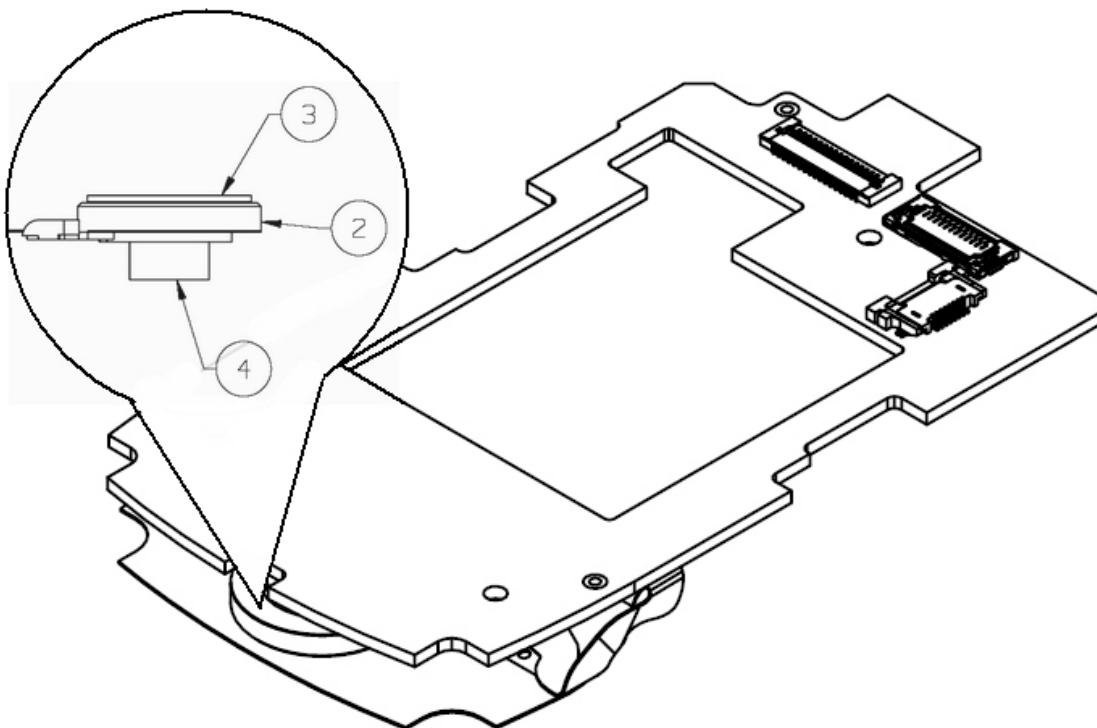


1.2 Main Board (Secondary side)



1.3 Sub PCB

The Mounting drawings show the components position on Sub PCB.



1.4 Part List Main Board

Contains only components that are possible to replace on the main board.

P=Primary side, S=Secondary side.

Pos. number refers to the components position number on the board.

Some components are noted as MSL X. These components are moisture-sensitive and are rated at various levels (MSL):

Level 1: Unlimited floor life; does not require dry pack or re-baking.

Level 2: 1 year floor life; ≤ 30 C; 60%rh; shipped in dry pack; must be re-baked after being opened if floor life is exceeded.

Level 2A: 4 week floor life; ≤ 30 C; 60%rh; shipped in dry pack; must be re-baked after being opened if floor life is exceeded.

Level 3: 168 hours floor life; ≤ 30 C; 60%rh; shipped in dry pack; must be re-baked after being opened if floor life is exceeded.

Level 4: 72 hours floor life; ≤ 30 C; 60%rh; shipped in dry pack; must be re-baked after being opened if floor life is exceeded.

Parts available to order will be found in the Web Shop.

Component placing will be found in document 1078/FEA 209 544/77.

NOTE! RF Calibration with SERP can only be done by authorized repair centers.

Side	Pos.	Description	Part Number	Comments
P	N1300	PA GSM	RYT101949/1	Replacement require RF-Calibration
P	E1002	Shield Can Lid PA	SXK1095669	Replacement require GO/NO GO TEST
P	X2601	FPC Connector	RNV79927	
P	X2500	USB Connector	RPT79933	
P	X2600	FPC Connector 21 pin lower cont.	RNV79926	
S	X2301	MS Duo Connector	RNK860117	
S	W1002	Coax Connector	RPT79938	
S	X2604	FPC Connector VGA Camera	RNV79920	
S	X2607	FPC Connector 21 pin lower cont.	RNV79926	
S	S2600	Camera Switch	RMD10122	
S	W1003	Antenna Switch	RPT79908	
S	W1001	External Antenna Connector	RPT79924	
S	X2300	SIM reader	RNK86043/1	
S	X2302	System Connector	RNV79903	
S	S2601	Push-Button	RMD10123 R1	
S	S2602	Switch2/Viola		
S	X2200	Battery Connector	RPV79919	

1.5 Part List Sub PCB

Contains only components that are possible to replace on the Sub PCB.

Pos. number refers to the components position number on the board.

Parts available to order will be found in the Web Shop.

Pos.	Description	Part Number	Comments
1	Sub PCB	SXK1096062/Z	
2	Speaker	RLE 90812	
4	Speaker Pad	SXA 1093020	
3	Speaker Gasket	SXA 1092884	

2 Revision History

Rev.	Date	Changes / Comments
A	2004-04-15	First release
B	2005-07-20	Changed layout and added Components E1002 and N1300